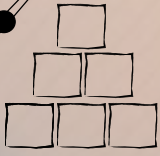




- Short Run Cartons
- SpeedBuild Cartons
- Bespoke Printed Cartons
- UN Certified Cartons
- RINOHIDE Export Cartons
- Retention & Suspension Packaging
- Stock Cartons
- Internal Cardboard Fittings
- Popular FEFCO Styles
- Archive Boxes
- Bulk Distribution Cases
- Wraps & Mailers
- Postal Boxes
- Solid Wall Cartons
- Wooden Crates & Cases
- Pallet Boxes
- ISO Modular cartons
- Eurofit Cartons
- Pallets
- BoardPal cardboard pallets
- Bag-in-Box transit systems



speed. build



SpeedBuild - Time Saving cartons for high speed packing lines.

Our innovative range of SpeedBuild Cartons reduce carton makeup times to just an amazing 1 second, that gives a time saving of almost 95% on some carton styles!!

SpeedBuild has been developed primarily for the ecommerce industry where bulk shipping is involved and the need for cutting time as much as possible is invaluable, these cartons don't just save money in wages they increase throughput in your packing department allowing you to increase turnover without increasing overheads. If you are struggling for space and volume is rising steadily don't waste time looking for extra space and employees just increase your throughput with our great, innovative SpeedBuild Cartons.

The SpeedBuild Alternative to Standard 0201 Cartons:

Our standard range of SpeedBuild cartons are aimed at general boxing requirements, these cartons typically cut carton erecting times by up to 80% and only add a few pence on to each carton making this a fantastic cost saving option.

The SpeedBuild Alternative to 0427 Folding Cartons:

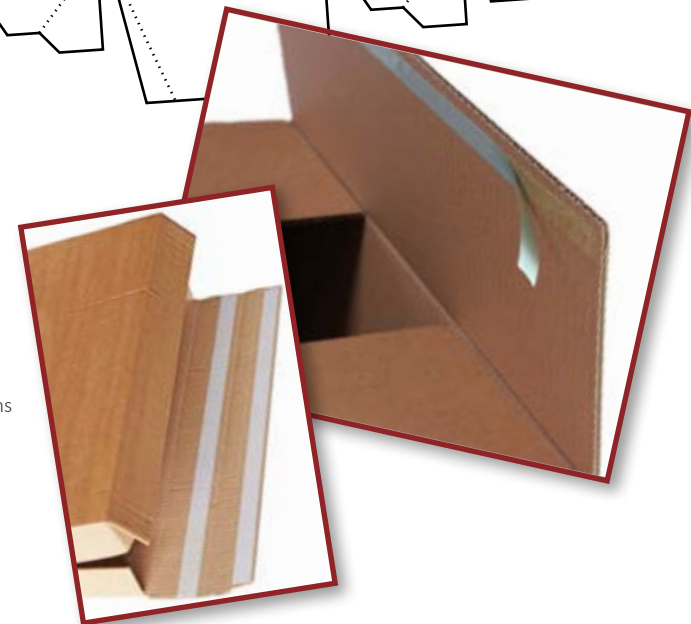
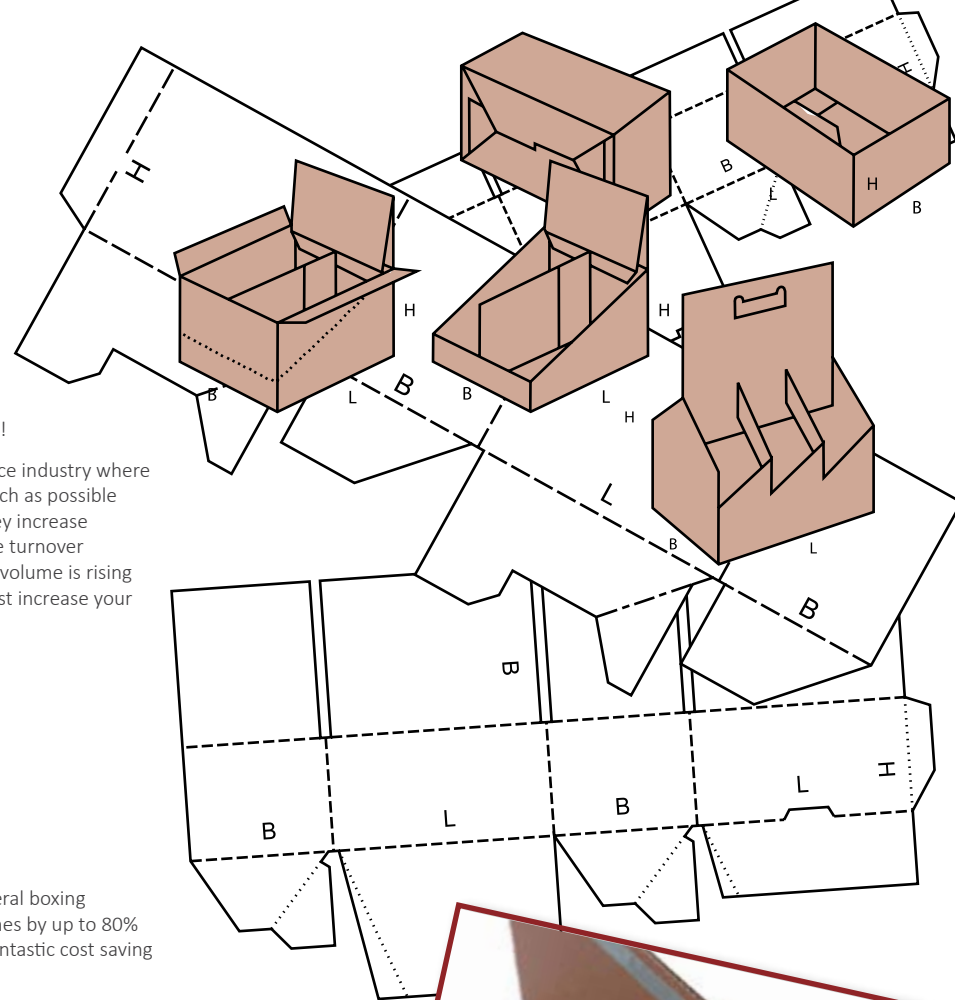
These are a real wow...we can save you up to 95% carton erection time and reduce your environmental impact at the same time!! These cartons are often a very similar price to 0427 styles and offer unbeatable presentation when coupled with our SealaStrip adhesive sealing strip and TearStrip opening tear strip.

SealaStrip Self-Adhesive Sealing Strip

High grab glue strip with a silicon backing paper makes sealing your cartons fast, simple and tamper-evident as well as increasing the presentation of your packaging. Easily incorporated into most SpeedBuild designs.

TearaStrip Tear Opening Strip

An innovative tear strip without the need for a backing tape gives you a completely free tear opening option. Include this great design to increase your customers perception and ease of use.



Call our Sales Team on 02476 611234



Enhance the Power of your Brand

Here at Datec we offer a full range of printed packaging to increase your image and spread your brand. Whether it is industrial or transit packaging, retail and point of sale packaging, or product display stands and end of aisle bins we have the solution for you.

From design to sampling and through to delivering your packaging we offer full support in each area to guide you through the best routes and ideas, and infuse your packaging with innovation.

Printing Methods & Finishes

Deciding which print method to go for can be tricky and expensive if you get it wrong, that's why we're here to guide you through the difficult decisions and provide you detailed information on the pros and cons of different turnings at each juncture of the design process.

Litho-Laminate Printing

High quality printing for high end retail packaging. High quality paper is printed with high definition lithographic printers capable of printing at photo quality levels, then the printed paper is laminated to the cardboard and finished with a gloss or matt varnish to protect the print.

High Definition Flexo Post Print

New printing machines have brought the quality of flexo post print to a level where litho-laminate is all but redundant on high volume runs. Although the setup costs are high, unit costs are low compared to litho printing and provide a similar print quality and varnish options.

Pre-Press Printing

The ultimate option for high volume manufacturing runs. This method uses litho pre-printed paper as the corrugated board is manufactured giving litho-laminate quality at very cost effective prices. Especially good for flood-coat and flood-pattern printing as using this method completely eliminates flute shadow giving a perfect print finish.

Screen Printing

An effective printing process for applications where high quality printing is needed but run quantities are relatively small. Origination costs are low so this method is ideal for medium runs.

Flexo Printing

The common method used for most industrial and transit packaging. Simple logos and text can be printed in up to four colours and is a cost effective way of promoting your company brand and message.



Design and Sampling

The design stage is one of the most important stages in the development of your packaging, it is here that ideas and innovation need to be infused with practical experience to maximise the impact the packaging will have on your potential customers. This is the stage which will determine just how much your packaging will interact with your customer and here at Datec we believe in helping you sell more.

After we have created a perfect design which will grab your customers attention we need to make sure it will work!! We provide actual size samples in the correct board grade to check the strength, construction and size of the design to make sure everything fits, and you are completely happy with our ideas.



Short Run Digital Printing

Ever wanted high quality printed packaging or display stands in low to medium manufacturing run quantities?

Using one of the latest flat bed wide format digital printers and UV-cured ink we can now offer printing directly to a wide range of rigid and flexible substrates in high resolution with very striking print quality.

Wide format digital printing is increasingly popular because it is the only cost-effective way of printing small to medium quantities of full colour cardboard displays, posters, boxes, standees, etc. Not only are we able to produce great quality prints with digital printers but we can also do the cutting too with CNC cutting tables that can cut and crease your wide format digital prints so that you can be as creative as you want with your ideas and let us do the rest.

What is RRP?

High impact packaging which goes straight from transit to the shelf saving you time and money.

Retail Ready Packaging is really exactly what it sounds like, packaging that is designed with the retail market in mind. It goes further than SRP (Shelf Ready Packaging) in that it aims at promoting your goods not just presenting them on the shelf. New ideas, materials, print finishes and designs all combine to make this concept a powerful tool in selling more of your products.

Give our Sales Team a call today to find out more about how this can help you.



UN CERTIFIED



When shipping products that are classed as Dangerous or Hazardous Goods under UN Regulations the correct certified packaging must be used. Here at Datec Packaging we offer a comprehensive range of 13 standard sizes that cover most packaging applications for most dangerous and hazardous goods classes.

If in doubt speak to our sales team who will guide you through the options to find the correct packaging solution for you and your products.

- **UN Approved for Road, Rail, Air and Sea Transport** - All our UN cartons are accepted by most major freight handlers and couriers.
- **Wide Stock Range** - 13 standard sizes with 4G and 4GV certification.
- **Packaging for Most Classes of Dangerous Goods** - Our stock range caters for packaging groups 1, 2 & 3 with and without liners.
- **World Wide Transportation** - Our UN approved packaging is recognised by most countries allowing you to ship your goods worldwide.



UN Approved Timber Cartons and Crates also available. Speak to our Sales Team for more information.



Stock UN Certified Cartons

Code	Description	4G Max Weight	4GV Max Weight*	Pack Qty	Pallet Qty	Notes
UNCC005	UN Certified Carton 175 x 155 x 215mm	3kg	5kg	10	500	
UNCC010	UN Certified Carton 213 x 213 x 223mm	4kg	8kg	10	500	
UNCC015	UN Certified Carton 235 x 230 x 250mm	4kg	-	10	240	
UNCC020	UN Certified Carton 275 x 195 x 300mm	7kg	11kg	10	120	2 x 5ltr IBC Containers
UNCC025	UN Certified Carton 325 x 245 x 300mm	11kg	16kg	10	120	
UNCC030	UN Certified Carton 360 x 260 x 295mm	13kg	18kg	10	120	4 x 5ltr IBC Containers
UNCC035	UN Certified Carton 430 x 310 x 300mm	19kg	27kg	10	120	
UNCC040	UN Certified Carton 420 x 240 x 440mm	12kg	-	10	65	
UNCC045	UN Certified Carton 390 x 390 x 425mm	29kg	34kg	10	60	
UNCC050	UN Certified Carton 420 x 420 x 440mm	19kg	-	10	60	
UNCC055	UN Certified Carton 575 x 370 x 420mm	42kg	50kg	10	60	
UNCC060	UN Certified Carton 600 x 600 x 440mm	45kg	-	10	65	
UNCC065	UN Certified Carton 775 x 575 x 540mm	80kg	91kg	10	40	Fits on a Half Euro Pallet

* Packing Group 1 Weights only, please speak to our sales team for other group packaging weights.

Visit our Website at www.datecpackaging.com

Need a real TOUGH box?

Choose RINOHIDE to get your products to your customer in perfect condition.

The Ultimate solution for export and heavy duty packaging.

Extreme board strength is what every exporter looks for, and this is our sole aim in creating the 'RhinoHide' range of export quality board. When it is imperative that your shipment arrives in impeccable condition after having to survive, often for weeks on end, the rigors of constant movement, vibration, shock impact, humidity, water damage, puncture damage and abrasion which are associated along with the difficulties of exporting, trust 'RinoHide' to get your product to your customer in unquestionable safety and security.

Our 'RinoHide' range is available with eight Toughness levels in TripleSkin and QuadSkin variants covering a very wide range of applications from standard UK and export shipping through to replacing even timber crates in some instances.

RinoHide TRIPLeten: The Perfect low cost upgrade from standard double wall, if you are having problems with your cartons splitting or crushing speak to us about it, we can send a few samples to you in this grade for you to test out and see if it solves your problem.

RinoHide TRIPLEtwenty: Need to upgrade slightly from TRIPLeten?? Try out TRIPLEtwenty...with stronger and thicker paper on the front and back, this grade offers higher puncture resistance and greater rigidity to deliver higher performance and greater peace of mind.

RinoHide TRIPLEthirty: Export quality with chemically strengthened fluting and strengthened interior lining papers. This is an ideal board for smaller cartons and palletbox caps and trays.

RinoHide TRIPLEforty: A step up from TRIPLEthirty offering a true performance grade board which is as rigid as plywood. This grade will cope with all but the toughest export case requirements.

RinoHide QUADten: Our standard QUADskin board grade, with 4 paper linings and a thickness of 15mm, the QUADskin range offers superior puncture resistance and board rigidity. Ideal for larger cases and palletboxes where heavy weights or loose, migratable products are being transported.

RinoHide QUADtwenty: When you want that extra peace of mind upgrade to QUADtwenty to get a stronger and more rigid board with higher puncture resistance and compression strengths.

RinoHide QUADthirty: The highest strength board on the market in the UK, this board grade has even replaced timber crates in a range of applications, cutting costs and creating easier to use packaging. A suitable testament to an advanced quality standard.



Retention Packaging

A packaging system that can be just as varied as your products themselves. This flexible system is compact and holds your products firmly in position during transit. With this process, our retention packaging combines the good properties of product cushioning and product holding.

Retention packaging can individually adapt to even the most varied product contours. Due to the "suspended delivery", there is a very high degree of protection against shocks and vibrations.

Thanks to the innovative construction, you only need one inner section (standard systems usually require 2-3 parts) and the packaging time is considerably reduced.

By using this process, differing product dimensions can be sent in the same packaging without the need for extra materials.

No time-consuming folding as in previous systems is required here. Your product is quickly and simply packaged so that it is ready for sending.

Reduce your storage volumes as far fewer packaging sizes are needed.

This new system means that you can benefit from an environmentally friendly and reusable packaging system and make a contribution to the environment. The carbon footprint is considerably less than in the case of standard packaging (e.g. foam, bubblewrap and similar protective products) and the used packaging can be fed unseparated into the waste cardboard cycle.



Suspension Packaging

The highly flexible but practically tear-free stretch film clings perfectly to the different product contours. Clamping between two suspension cushions means that the product will be stored as if it was "floating on air" during the transport. Even if the box is dropped on its side walls the product will remain in position.

- High-level protection for fragile products against shock and vibration
- Products are transported as if they were "floating on air"
- Easy handling and fast packing
- Storage space reduction compared with foam solutions
- Reduction of process costs (procurement, storing, shipment)
- Reusable
- Environment-friendly, can be disposed of with waste cardboard
- Professional appearance

Our Suspension packaging adapts optimally to the most varied product contours like a second skin. New product lines from your company can often be packed immediately with existing packaging sizes due to the generic design of our stock range.

With our accessory compartment innovation, product accessories can be packed securely in separate compartments. Whether it's a manual, cables or remote controls, everything is firmly fixed in position.

We also offer special packaging ideas and new developments according to your individual needs and particular product design.



One Piece Retention Packaging

One piece mailing packs for small components or parts.

Code	Size
RET1P050401	120mm x 100mm x 20mm
RET1P050402	120mm x 100mm x 40mm
RET1P080403	200mm x 100mm x 60mm
RET1P100603	240mm x 160mm x 70mm
RET1P161001	400mm x 250mm x 30mm



Another 19 sizes available on request!!

Two Piece Retention Packaging

Two piece retention packaging in a wide range of size to fit most general applications. Sizes are maximum dimensions of the items being packed, comes with outer carton.

Code	Size
RET2P080603	190mm x 160mm x 60mm
RET2P101003	250mm x 250mm x 80mm
RET2P110705	280mm x 180mm x 120mm
RET2P120803	300mm x 200mm x 70mm
RET2P151004	360mm x 240mm x 100mm
RET2P161304	400mm x 320mm x 110mm
RET2P201306	500mm x 320mm x 150mm
RET2P201202	510mm x 300mm x 50mm
RET2P181202	442mm x 289mm x 50mm 10-12" Netbooks
RET2P251602	630mm x 418mm x 50mm 15-17" Laptops



Another 42 sizes available on request!!

Suspension Packaging

High protection packaging in a wide range of sizes to fit most general applications. Sizes are maximum dimensions of the top surface size of the item being packed, variable height according to outer carton depth.

Code	Size
RETSP0505	130mm x 130mm
RETSP0804	200mm x 100mm
RETSP1007	250mm x 180mm
RETSP1010	250mm x 250mm
RETSP1208	300mm x 200mm
RETSP1212	300mm x 300mm
RETSP1612	400mm x 300mm
RETSP1818	450mm x 440mm
RETSP2012	500mm x 300mm
RETSP2020	500mm x 500mm



Another 15 sizes available on request!!

Stock Cardboard Cartons

For customers that need a selection of carton sizes for packaging a range of products, we offer a comprehensive range of stock cartons in a standard single wall and heavy duty double wall cardboard.

For bespoke carton sizes, call our Sales Team on: 02476 611234

Single Wall Stock Cartons

Code	Description	Pack Qty
222060607	S/Wall Carton 150mm x 150mm x 180mm	25
222070505	S/Wall Carton 205mm x 125mm x 125mm	25
222070707	S/Wall Carton 175mm x 175mm x 175mm	25
222080808	S/Wall Carton 200mm x 200mm x 200mm	25
222090607	S/Wall Carton 240mm x 160mm x 175mm	25
222090704	S/Wall Carton 235mm x 170mm x 110mm	25
222090905	S/Wall Carton 230mm x 230mm x 125mm	25
222101012	S/Wall Carton 254mm x 254mm x 305mm	25
222120903	S/Wall Carton 305mm x 229mm x 76mm	25
222120904	S/Wall Carton 305mm x 229mm x 115mm	25
222120906	S/Wall Carton 305mm x 229mm x 150mm	25
222120909	S/Wall Carton 305mm x 229mm x 229mm	25
222121206	S/Wall Carton 305mm x 305mm x 152mm	25
222121212	S/Wall Carton 300mm x 300mm x 300mm	25
222131004	S/Wall Carton 330mm x 240mm x 115mm	25
222141006	S/Wall Carton 350mm x 250mm x 150mm	25
222141411	S/Wall Carton 350mm x 350mm x 270mm	25
222151011	S/Wall Carton 375mm x 250mm x 275mm	25
222160519	S/Wall Carton 400mm x 130mm x 480mm	25
222161212	S/Wall Carton 390mm x 280mm x 280mm	25
222161616	S/Wall Carton 400mm x 400mm x 400mm	25
238181212	S/Wall Carton 457mm x 305mm x 305mm	25
222181408	S/Wall Carton 460mm x 360mm x 205mm	25
222190906	S/Wall Carton 480mm x 240mm x 160mm	25
222191510	S/Wall Carton 490mm x 380mm x 245mm	25
222231206	S/Wall Carton 575mm x 300mm x 150mm	25
222241216	S/Wall Carton 600mm x 300mm x 400mm	20
222241808	S/Wall Carton 610mm x 450mm x 200mm	20
222241814	S/Wall Carton 610mm x 450mm x 350mm	20
222261822	S/Wall Carton 650mm x 460mm x 550mm	20
225322414	S/Wall Carton 810mm x 615mm x 350mm	20

Double Wall Stock Cartons

Code	Description	Pack Qty
242080504	D/Wall Carton 215mm x 135mm x 117mm	10
242090704	D/Wall Carton 230mm x 177mm x 105mm	10
242090905	D/Wall Carton 225mm x 225mm x 125mm	10
242090907	D/Wall Carton 230mm x 230mm x 177mm	10
242100806	D/Wall Carton 260mm x 200mm x 160mm	10
242101011	D/Wall Carton 250mm x 250mm x 280mm	10
242110812	D/Wall Carton 280mm x 195mm x 300mm	10
242111106	D/Wall Carton 280mm x 280mm x 152mm	15
242120906	D/Wall Carton 305mm x 229mm x 150mm	15
242120909	D/Wall Carton 305mm x 229mm x 229mm	15
242121212	D/Wall Carton 300mm x 300mm x 300mm	10
242141414	D/Wall Carton 350mm x 350mm x 350mm	10
242151109	D/Wall Carton 375mm x 275mm x 230mm	10
242151112	D/Wall Carton 380mm x 280mm x 300mm	10
242161616	D/Wall Carton 400mm x 400mm x 400mm	10
242181209	D/Wall Carton 450mm x 305mm x 225mm	15
242181212	D/Wall Carton 457mm x 305mm x 305mm	15
242181812	D/Wall Carton 457mm x 457mm x 305mm	10
242181818	D/Wall Carton 457mm x 457mm x 457mm	10
242211314	D/Wall Carton 525mm x 325mm x 350mm	10
242221710	D/Wall Carton 559mm x 432mm x 254mm	10
242241013	D/Wall Carton 610mm x 254mm x 330mm	10
242241614	D/Wall Carton 600mm x 400mm x 350mm	10
242241818	D/Wall Carton 610mm x 457mm x 457mm	10
242242410	D/Wall Carton 600mm x 600mm x 250mm	10
242242424	D/Wall Carton 600mm x 600mm x 600mm	10
242271812	D/Wall Carton 686mm x 457mm x 305mm	10
242282812	D/Wall Carton 720mm x 720mm x 300mm	10
242301812	D/Wall Carton 760mm x 455mm x 305mm	10
242331105	D/Wall Carton 855mm x 285mm x 135mm	10
242361012	D/Wall Carton 915mm x 254mm x 300mm	10
242361216	D/Wall Carton 915mm x 300mm x 400mm	10
242421208	D/Wall Carton 1060mm x 305mm x 200mm	10
245463126	D/Wall Carton 1180mm x 780mm x 670mm	Each
248483229	D/Wall Carton 1200mm x 800mm x 750mm	Each

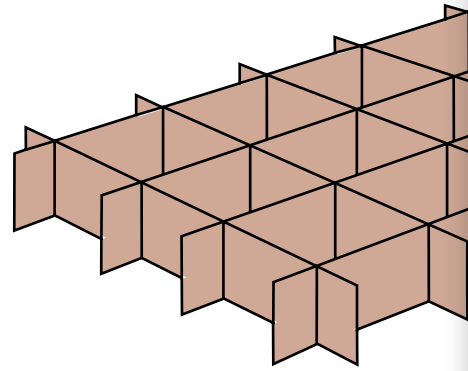


Internal Cardboard Fittings

Here we really let our creativity go wild!! It's amazing what you can do with cardboard, it's an origami paradise.

Internal fittings can be designed for diecut, slotted and postal cartons as well as rigid plastic and metal containers and stillage's. With a range of cardboard grades, colours and printing abilities we are confident of creating and producing the internal fitting you need to secure your products in transit.

Fittings can be separate to the carton or designed so they are manufactured from one complete piece of cardboard to save time and simplify the assembling process.



Die Cutting

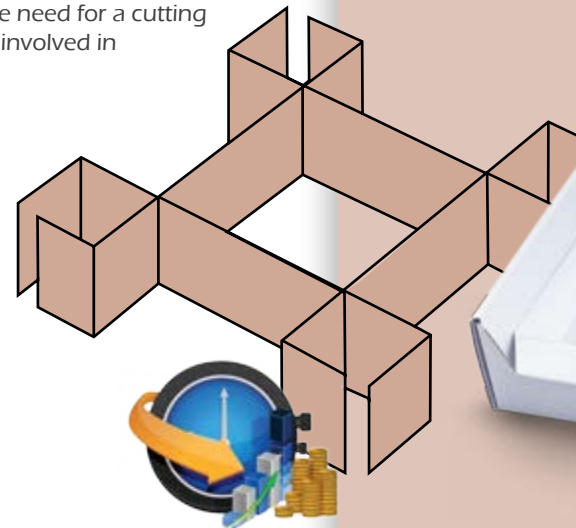
Die cutting is a fast and cost efficient cutting and creasing process that is often used to cut cardboard sheet to a comprehensive range of shapes and sizes from tiny to massive.

By using this method we can cut almost any shape you need in standard FEFCO codes or a completely bespoke shape to fit your particular application.

We can do a range of different cuts, partial cuts and creases to perform a range of different tasks and enable us to provide an unbeatable range of options to get your packaging just right for you.

CAD Cutting

CAD cutting is often used for short run or fast turnaround work as this uses laser or mobile knife cutting technology direct from a software design. This process removes the need for a cutting forme and the extra costs and lead-times involved in standard die-cutting methods.



Ecommerce Postal Packs

With the ecommerce market expanding rapidly there is more and more demand for postal packs that will withstand the rigors of a courier service as well as presenting and protecting your products in optimum condition.

E-commerce is a dynamic industry that is unpredictable at times, which is why we have tailored a product and service portfolio to ensure this market sector has a flowing supply of ideas and innovations to constantly provide solutions as specific needs arise.

We can add extra options such as tear strips, peel & seal adhesive sealing strips, internally printed reversible gift packs (to give your customer a presentation gift box option without the need to wrap the gift), returns sealing strips, message window cartons, etc... All these options combine to make an indelible impression on your customers mind and dramatically increase the likelihood of repeat business for just a few pence per package.

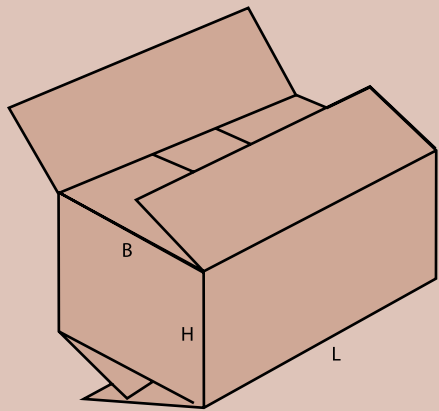


How to Measure a Box

Open the carton out and make up the bottom and sit the carton on a table (or the floor) as if you were going to fill the carton.

1. First measure the inside of the longest side of the opening of the carton, this is the length (L) of the carton.
2. Next measure the shortest side of the opening, this is the breadth (B) of the box.
3. The height (H) of the carton is the distance between the two creases where the flaps fold down.

The dimensions should look something similar to this:
400mm (L) x 300mm (B) x 300mm (H)

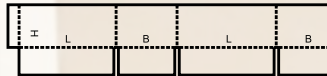
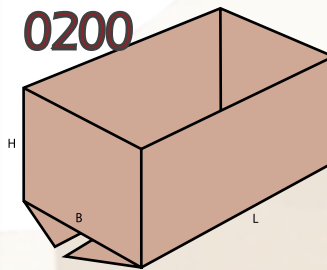


Did you know?...

The paper liners used in corrugated board can also have special coatings, finishes or properties for specialist applications.

- Laminated Polythene
- Anti Static Additives
- Conductive Additives
- Colour Washes
- Water/Moisture Resistant Adhesives
- Fire Resistant
- Anti Abrasive Laminate
- Acid Free
- Clay Coatings
- Soft Tissue Laminate
- Post Consumer/Recycled Content
- Exposed Flute
- Pre Printed Paper
- Ripa Tape Strips
- Sealing Tape Strips
- Foam Lined

0200



0200: Open Top Carton

An open top carton commonly used for packaging a wide range of products where there is no need for a lid or a lid is put on separately. Popular for use with automated packing systems.

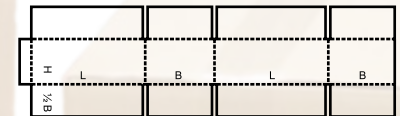
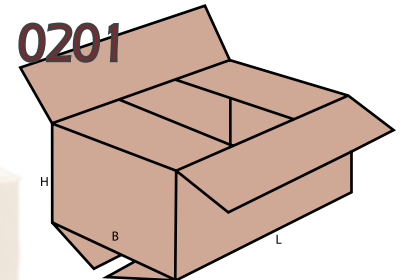
- No setup/origination costs (apart from printing)
- Available with hand holes, perforations, picking slots, and other small simple internal diecuts.
- Can be fully bespoke designed.

0201: Standard Carton

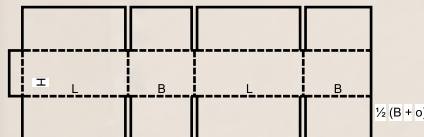
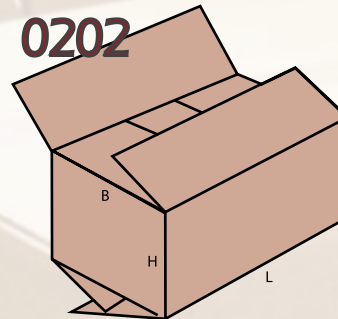
A standard carton commonly used for packaging a wide range of products. One of the most cost-effective general use carton designs available.

- No setup/origination costs (apart from printing)
- Available with hand holes, perforations, picking slots, and other small simple internal diecuts.
- Compatible with most carton sealing machines.
- Can be fully bespoke designed.

0201



0202

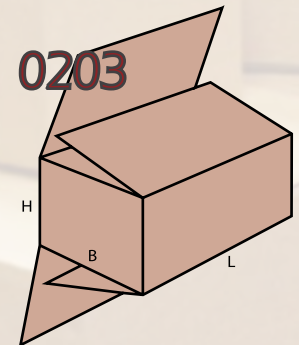


0202: Partly Overlapping Flaps

When you need a little extra strength choose our partly overlapping flaps option, the flaps overlap by your specified amount. Also can be used as returns packaging in conjunction with our adhesive seal strip and tear strip.

- No setup/origination costs (apart from printing)
- Available with hand holes, perforations, picking slots, and other small simple internal diecuts.
- Can be fully bespoke designed.

0203



0203: Fully Overlapping Flaps

Fully overlapping flaps for extra heavy items, the top and bottom flaps overlap completely significantly strengthening the carton. Often used in conjunction with our RinoHide corrugated cardboard.

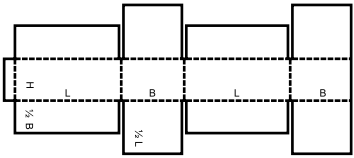
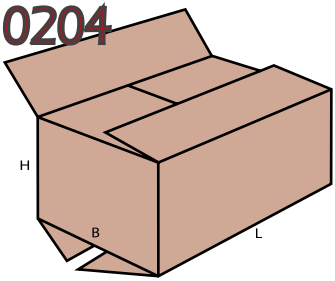
- No setup/origination costs (apart from printing)
- Available with hand holes, perforations, picking slots, and other small simple internal diecuts.
- Can be fully bespoke designed.

0204

0204: Internal & External Flaps Meet

Another method of increasing your carton strength, this option is often preferred for automated packing lines as it is compatible with most carton sealing machines.

- Setup/origination costs are applicable
- Available with fully bespoke internal diecutting.
- Can be fully bespoke designed.

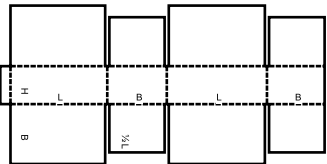
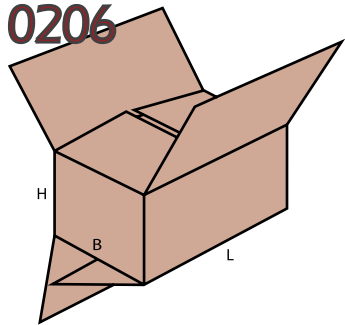


0205: Internal Flaps Meet & Outer Flaps Partly Overlap

Similar to an 0204 but will not need a die-cutting tool or setup origination costs so is more cost effective for smaller runs.

- No setup/origination costs (apart from printing)
- Available with hand holes, perforations, picking slots, and other small simple internal diecuts.
- Can be fully bespoke designed.

0206



0206: Internal Flaps Meet & Outer Flaps Fully Overlap

Similar to an 0204 but with fully overlapping top flaps as well as bottom flaps, this increases the top and bottom strength fourfold to offer a very robust carton construction.

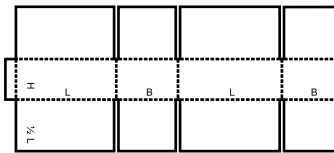
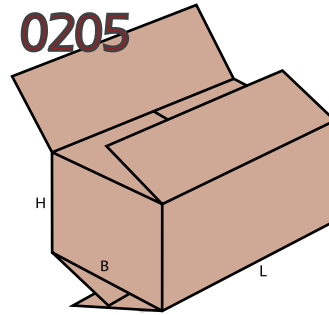
- Setup/origination costs are applicable
- Available with fully bespoke internal diecutting.
- Can be fully bespoke designed.

0209: Small Top Flaps

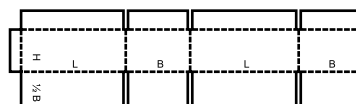
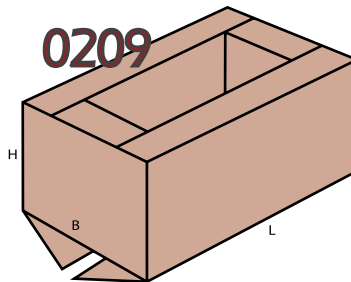
Small top flaps allow easy order picking direct from the carton, can be used in conjunction with a cap to offer a despatch carton which can be quickly converted to an order picking box, especially useful for the clothing industry.

- No setup/origination costs (apart from printing)
- Available with hand holes, perforations, picking slots, and other small simple internal diecuts.
- Can be fully bespoke designed.

0205



0209



Cardboard Glossary

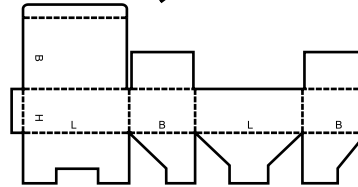
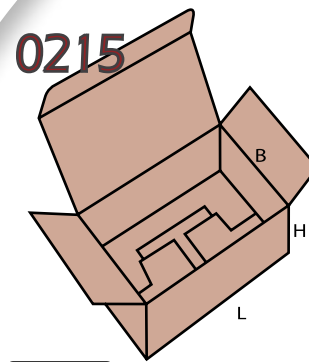
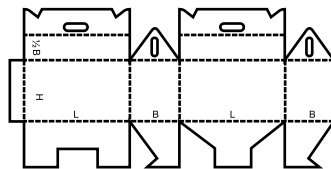
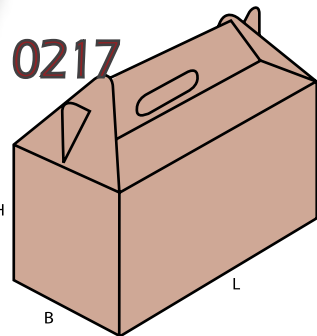
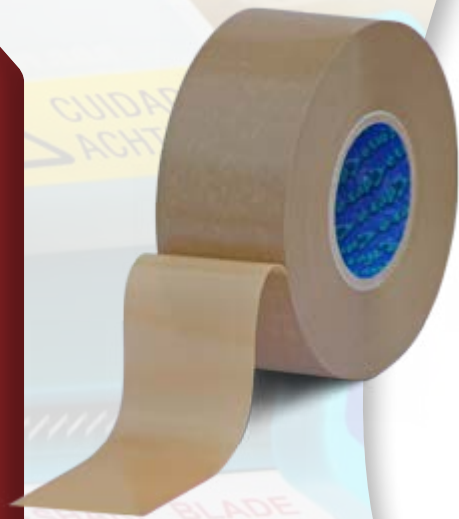
Often we will use strange words when we are talking about corrugated cardboard and not all of our customers understand what we mean so here's a glossary of common words and phrases and their meanings to help you make head and tail of our descriptions.

Code	
A Flute	Fluting of height 4-5mm also known as coarse flute
B Flute	Fluting of height 2.1-3mm also known as fine flute
Bio-Degradable	Capable of being decomposed by biological means
Box Compression Test	Strength test. The maximum loading before collapse
C Flute	Fluting of height 3.2-4mm also known as coarse flute
Coarse Flute	An alternative name for A or C flute
Coated Paper	Paper made with a layer of clay on top of the fibres
Corrugated Board	Formed fluting that is faced with a liner on both sides
Corrugator	The machine that actually makes corrugated board
Die-Cut	Stamping out of a box shape using steel rule dies
Double Wall Board	Board comprising LINER/FLUTE/LINER/FLUTE/LINER
Drop Test	A test for severe shock forces on a filled case
E Flute	Fluting of height 1-1.8mm, also called extra fine
Edge Crush Test	A corrugated board strength test of vertical crush resistance
F Flute	Fluting of height 0.75mm, also called micro flute
Flexographic	A type of printing for standard corrugated cases
Flute	A single ridge in the fluting medium or on the corrugator roll
Fluting Medium	Paper that has been formed into the flute profile
Fluting Profile	The shape of the corrugations
Gram Weight	Weight of paper specified as g/m2 (grams per square metre)
Kraft	Good quality paper made from long, resilient virgin fibre
Kraft Liner Stock	KLS- corrugated waste and old box's used for recycling
Liner	The inner and outer facing of corrugated board
Mullen Burst	A measure of tearing resistance
Multi-ply Paper	Paper made from a number of layers of pulped fibres
Pitch	The distance from one flute tip to the next
Recycled Paper	Paper which is made from extracting used paper fibre
Semichemical	Fluting made by semichemical process with virgin woodpulp
Sheet Plant	A corrugated box manufacturer that converts sheet board only
Single Face	A board or paper with one liner and fluting only
Single Wall	A board comprising LINER/FLUTE/LINER

Big Roll, Small Core...choose e-tape for premium quality and increased efficiency.

E-tape has been sold globally for a number of years with ever increasing success. The innovative industrial packaging tape which delivers the performance you need every time coupled with significant environmental benefits.

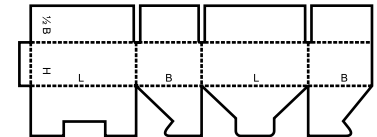
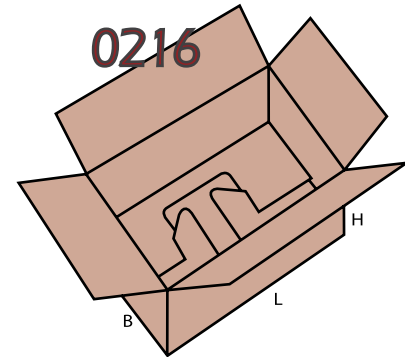
- 56% Space saving - 150m per roll
- 70% reduced core waste
- 56% less roll changes
- 44% less transport pollution
- Less manufacturing resource used
- Silencing dispensers mean low noise at no extra cost
- Cut your environmental impact.



0216: Fast Erect Flaps Meet Carton

Similar to 0215 but with top flaps that meet in the middle for use with most automated carton sealing machines. This is also often more cost-effective than the 0215 design.

- Setup/origination costs are applicable
- Available with fully bespoke internal diecutting.
- Can be fully bespoke designed.
- Use with a outer wrap for a secure carrier despatch option.



0217: Carry Case Presentation Carton

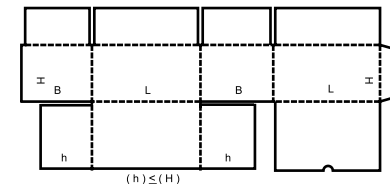
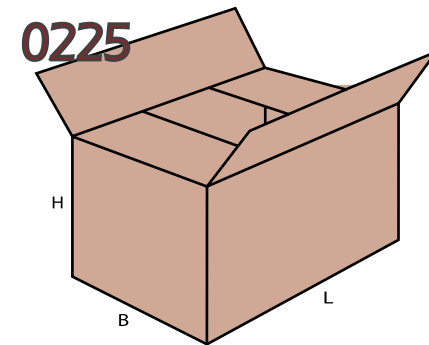
Often used for wine bottles and other beverages in conjunction with an internal fitting, these cartons have a carry handle which is quickly erected.

- Setup/origination costs are applicable
- Available with fully bespoke internal diecutting.
- Can be fully bespoke designed.
- Carrier despatch options available, speak to our sales team.

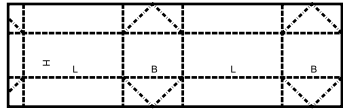
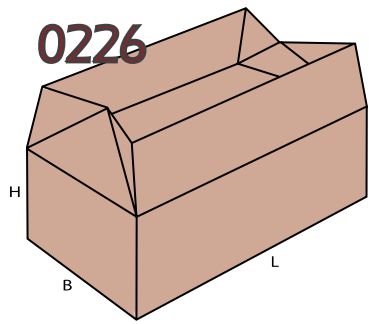
0225: Strengthened Base Carton

Double layer bottom and end panels make this carton a very sturdy and durable option for heavy items. Often used for archive boxes and other long-term storage applications.

- Setup/origination costs are applicable
- Available with fully bespoke internal diecutting.
- Can be fully bespoke designed.



0226



0226: Joined Flaps Carton

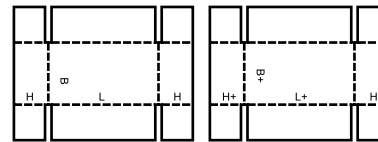
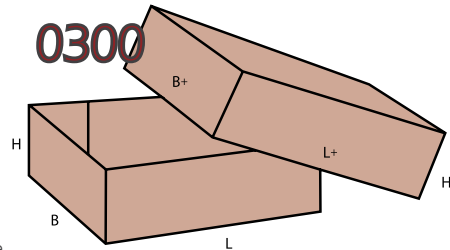
An unusual carton for specialist applications where the top flaps need to be kept upright during filling. Useful for automated packing lines where top flaps can snag on conveyors.

- Setup/origination costs are applicable
- Available with fully bespoke internal diecutting.
- Can be fully bespoke designed.
- Sealed ends give a pilfer resistant option for carrier despatch cartons.

0300: Standard Tray and Cap

Standard tray and cap configuration for large flat items, corners need to be joined so if volume is required consider our 0422 option. Both the tray and the cap are the same depth.

- No setup/origination costs (apart from printing)
- Available with hand holes, perforations, picking slots, and other small simple internal diecuts.
- Can be fully bespoke designed.

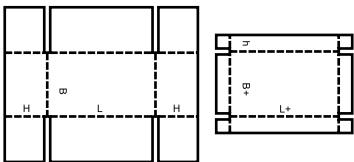
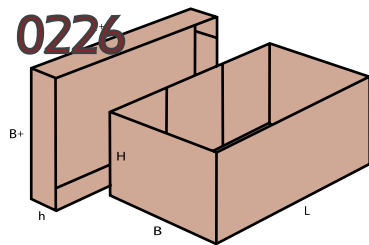


0306: Oversize Tray and Cap

Similar to our 0300 style but with a deeper tray. This option is useful if the tray needs to be greater than 100mm as using a shallower cap is more cost effective.

- No setup/origination costs (apart from printing)
- Available with hand holes, perforations, picking slots, and other small simple internal diecuts.
- Can be fully bespoke designed.

0226

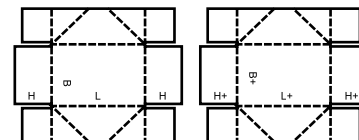
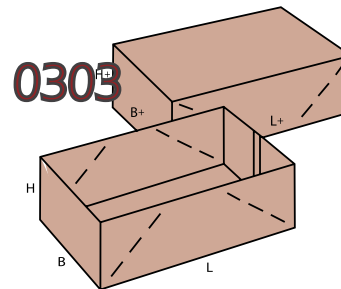


0303: Lay Flat Tray and Cap

Similar to our 0300 style but with extra creases enabling the tray and cap to be folded flat for more economical storage.

- Setup/origination costs are applicable
- Available with fully bespoke internal diecutting.
- Can be fully bespoke designed.
- Also available with fold over flap ends for faster carton erection.

0303



Case Taping Machines

Have you had a look at our high speed taping machines? We offer a full range of case taping machines for a wide selection of applications. Whether you need speed, size or specialist accessories we have the right machine for you at the right price. All our machines are built to a high quality, rugged proven design and meet CE392 machine directives.





Archive Boxes

Durable archive boxes with attached or separate lids. These can be manufactured to your bespoke sizes and printed if you need a reasonable quantity, please speak to our Sales Team for more information.

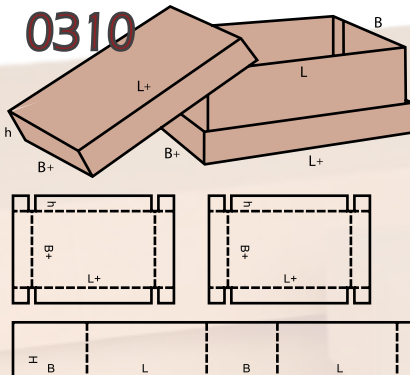
Code	Description	Pack Qty
AHB161310H	Archive Box 405mm x 323mm x 254mm Hinged Lid	25
AHB151312S	Archive Box 370mm x 320mm x 290mm Separate Lid	25



Hanging Garment Wardrobe Box

Save time with our hanging garment carriers, ideal for house moving & storage. These cartons keep your clothes crease free and saves time and hassle that comes with packing suitcases. Can also be used for sending clothing and other similar items through carrier networks.

Code	Description	Pack Qty
HGWB18	Hanging Garment Wardrobe Box 508mm x 457mm x 1245mm	Each
HGWHB	Handing Bar for Wardrobe Box 457mm	Each



0310: Tray, Cap & Sleeve

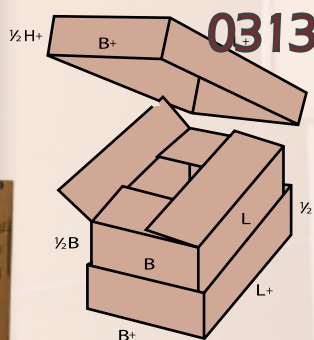
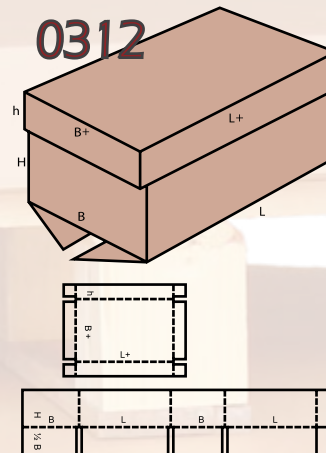
Tray, cap and sleeve configuration as a set often used as a pallet box and can be ordered attached to a pallet.

- No setup/origination costs (apart from printing)
- Some sizes are available with hand holes, perforations, picking slots, and other small simple internal diecuts.
- Can be fully bespoke designed.
- Bespoke sized pallets also available.

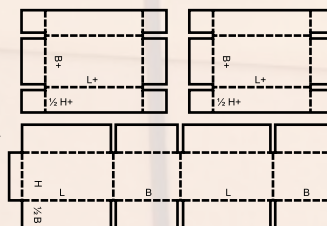
0312: Fully Overlapping Flaps

An 0200 base and lid configuration often used in automated or high speed packing lines as there are no top flaps to snag on conveyors. Larger sizes are used as pallet boxes in conjunction with wooden or cardboard pallets.

- No setup/origination costs (apart from printing)
- Some sizes are available with hand holes, perforations, picking slots, and other small simple internal diecuts.
- Can be fully bespoke designed.
- Bespoke sized pallets also available.



0313



0313: Fully Overlapping Flaps

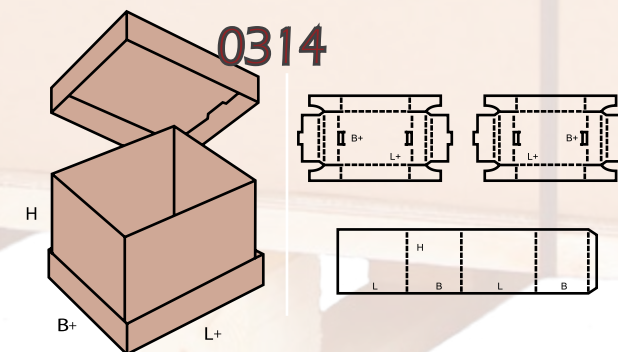
These cartons are for very heavy duty applications where high performance outer packaging is essential. They can be used for smaller cartons as well as with a pallet to make a pallet box.

- No setup/origination costs (apart from printing)
- Some sizes are available with hand holes, perforations, picking slots, and other small simple internal diecuts.
- Can be fully bespoke designed.
- Bespoke sized pallets also available.

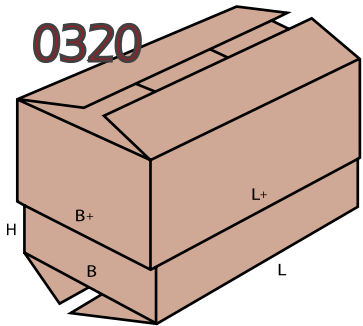
0314: Tray, Cap & Sleeve with Foldover Ends

Faster to erect and more cost effective in larger volumes this type of carton configuration is generally used as a pallet box in conjunction with a wooden or cardboard pallet.

- Setup/origination costs are applicable
- Some sizes are available with fully bespoke internal diecutting.
- Can be fully bespoke designed.
- Bespoke sized pallets also available.



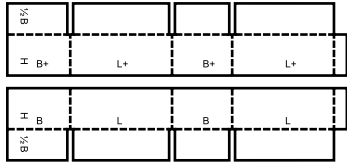
0320



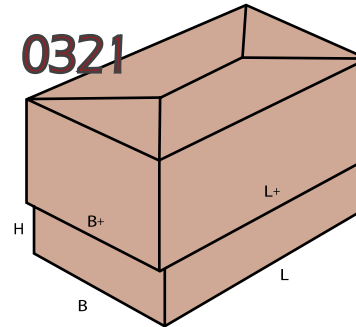
0320: Telescopic Cartons

Telescopic cartons are two open top cartons which slide inside each other, ideal for multi sized orders or for packing a range of sizes in one carton. Often used for Mirrors, Paintings, Frames, Prints, etc...

- No setup/origination costs (apart from printing)
- Available with hand holes, perforations, picking slots, and other small simple internal diecuts.
- Can be fully bespoke designed.



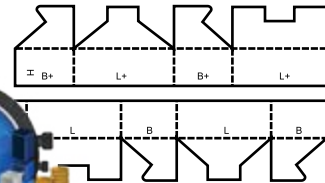
0321



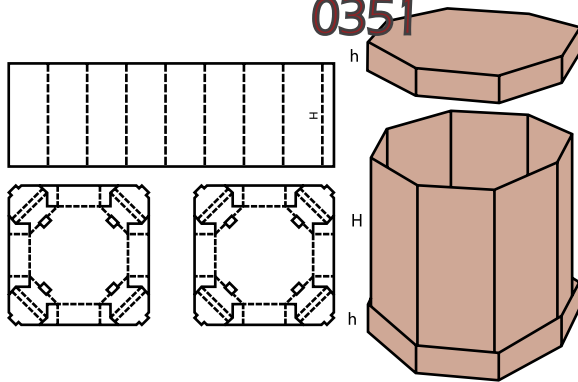
0321: Fast Erect Telescopic Cartons

Similar to our 0320 option these cartons have fast erect bottoms which do not need taping or sealing. Used these cartons in conjunction with our Tenso Strapping to speed up your packing operation.

- Setup/origination costs are applicable
- Available with fully bespoke internal diecutting.
- Can be fully bespoke designed.



0351



0351: Octabins

Often used as waste bins, bulk storage bins or POS display units. These bins can be quickly assembled on site to form a useful bulk packaging carton. Also used for packaging round cylindrical shaped objects that are often awkward to package effectively.

- Setup/origination costs are applicable
- Available with fully bespoke internal diecutting.
- Can be fully bespoke designed.



BDC Bulk Distribution Cartons

A range of five standard sizes commonly used for distributing items in retail mail order supply chains. Ideal for use in most pick and pack operations these cartons are optimally designed to make the most of parcel carrier restrictions.

Code	Description	Pallet Qty
BDC1	BDC 1 Carton 610mm x 279mm x 356mm	350
BDC2	BDC 2 Carton 406mm x 279mm x 356mm	700
BDC3	BDC 3 Carton 406mm x 279mm x 178mm	700
BDC4	BDC 4 Carton 610mm x 279mm x 178mm	525
BDC6	BDC 6 Carton 305mm x 279mm x 356mm	700





BookWrap Mailers

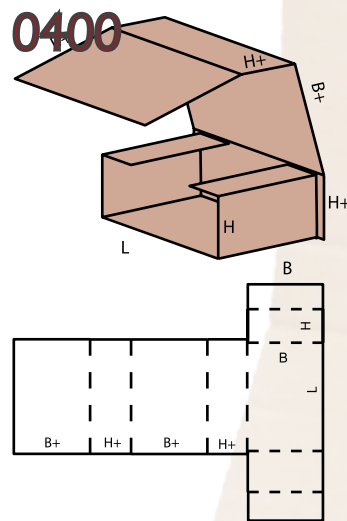
The Fast and cost efficient Book Wrap with side strips to stop the internal flaps from bulging and the contents of your parcel falling out which often happens with larger depth mailings. These bookwraps are manufactured from strong stiff corrugated cardboard and as a result offer very high protection levels and puncture resistance. All sizes come with a peel & seal closure strip and a tear strip for easy opening.

Code	Description	Pack Qty
TPBWM01	Tufpac BookWrap Mailers 147mm x 126mm x 55mm	20
TPBWM02	Tufpac BookWrap Mailers 217mm x 155mm x 60mm	20
TPBWM04	Tufpac BookWrap Mailers 251mm x 165mm x 60mm	20
TPBWM06	Tufpac BookWrap Mailers 270mm x 190mm x 80mm	20
TPBWM08	Tufpac BookWrap Mailers 302mm x 215mm x 80mm	20
TPBWM12	Tufpac BookWrap Mailers 325mm x 250mm x 80mm	20
TPBWM14	Tufpac BookWrap Mailers 330mm x 270mm x 80mm	20
TPBWM17	Tufpac BookWrap Mailers 380mm x 290mm x 80mm	20
TPBWM18	Tufpac BookWrap Mailers 455mm x 320mm x 70mm	20



'Umbrella' Boxes

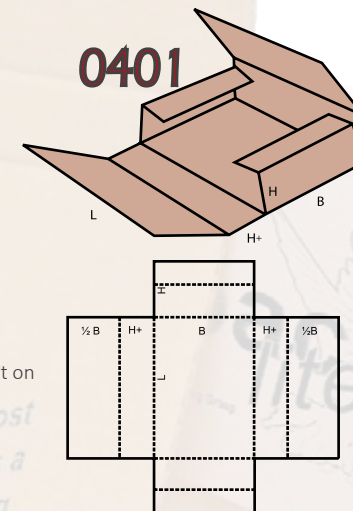
Umbrella boxes are a common name given to long thin tube like cartons similar to the sizes above. We can get these manufactured to your bespoke size in a range of board grades and colours. Speak to our Sales Team for more information.



0400: Folder Wrap

A folder type wrap used for small flat items, quick and easy to use although is more difficult with bigger sizes. If you are packing over 500mm x 500mm our 0401 would be a better option.

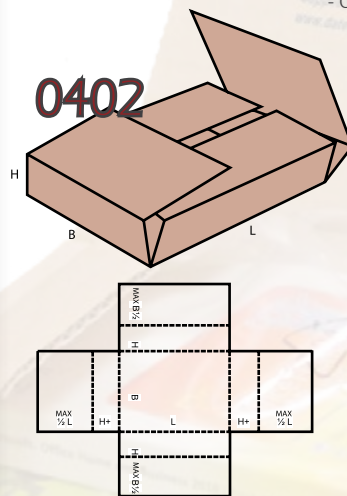
- Setup/origination costs are applicable
- Available with fully bespoke internal diecutting.
- Can be fully bespoke designed.



0401: Maltese Cross Wrap

A commonly used wrap for large format flat items such as prints, frames, mirrors, etc... Short end flaps can sometimes be an issue when sending out on courier, our 0402 would be a better option in this application.

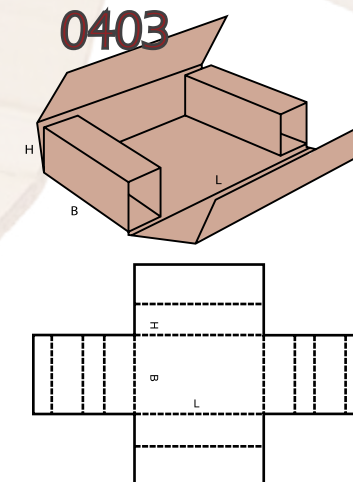
- Setup/origination costs are applicable
- Available with fully bespoke internal diecutting.
- Can be fully bespoke designed.



0402: Maltese Cross Wrap with Both Flaps Meeting

Similar to our 0401 design but with the internal flaps meeting in the middle to give greater security when sending via courier.

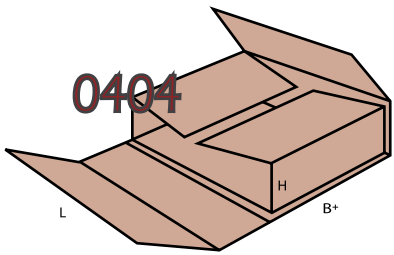
- Setup/origination costs are applicable
- Available with fully bespoke internal diecutting.
- Can be fully bespoke designed.



0403: Folder Wrap with End Sections

Cross wrap configuration with folded end sections which can be used for smaller accessories or as a protective crumple zone or cushioning pad.

- Setup/origination costs are applicable
- Available with fully bespoke internal diecutting.
- Can be fully bespoke designed.

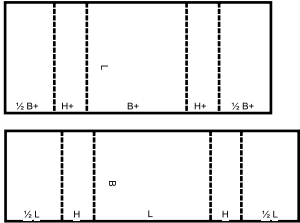


0404

0404: Two Part Wrap

A cost effective alternative to our 0402 style of wrap, this configuration results in less board wastage on most sizes. Some smaller sizes may need additional origination costs.

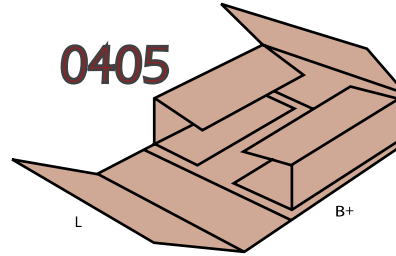
- No setup/origination costs (apart from printing)
- Some sizes are available with hand holes, perforations, picking slots, and other small simple internal diecuts.
- Can be fully bespoke designed.



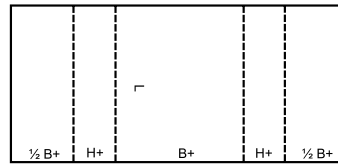
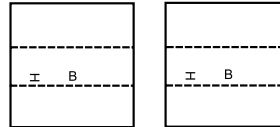
0405: Three Part Wrap

A cost effective alternative to our 0404 style of wrap, this configuration results in even less board usage especially on larger sizes. Some smaller sizes may need additional origination costs.

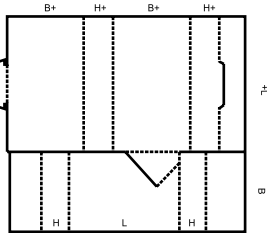
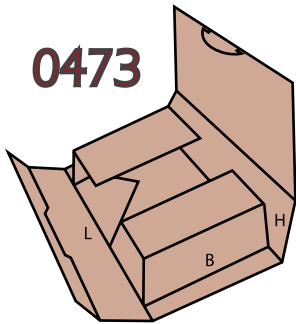
- No setup/origination costs (apart from printing)
- Some sizes are available with hand holes, perforations, picking slots, and other small simple internal diecuts.
- Can be fully bespoke designed.



0405



0473



0473: Twist Postal Wrap

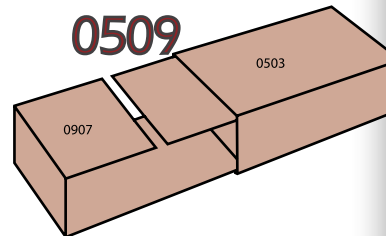
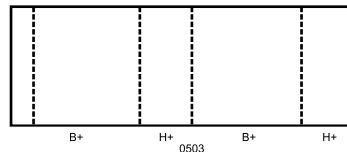
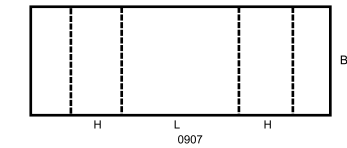
A great high protection option for mailing books and other flat items. Often used in ecommerce stores.

- Setup/origination costs are applicable
- Available with fully bespoke internal diecutting.
- Can be fully bespoke designed.

0509: Shell & Slide Cartons

Often used with a foam lining for packaging very fragile items but also useful as packaging for books and other flat products.

- No setup/origination costs (apart from printing)
- Some sizes are available with hand holes, perforations, picking slots, and other small simple internal diecuts.
- Can be fully bespoke designed.
- Can be adapted for Point Of Sale use.



0509

Tufpac TwistWrap Mailers

Very high protection Twist wrap style book mailers for those extra special items, with up to four layers of cardboard these are the optimum protection mailers. These BookBoxes are manufactured from strong stiff corrugated cardboard and as a result offer very high protection levels and puncture resistance. All sizes come with or without a peel & seal closure strip.



Code	Description	Pack Qty
TP03PS	Tufpac TwistWrap Mailers 225mm x 155mm x 50mm	20
TP05PS	Tufpac TwistWrap Mailers 238mm x 175mm x 50mm	20
TP07PS	Tufpac TwistWrap Mailers 275mm x 213mm x 50mm	20
TP09PS	Tufpac TwistWrap Mailers 305mm x 213mm x 50mm	20
TP11PS	Tufpac TwistWrap Mailers 325mm x 255mm x 75mm	20
TP13PS	Tufpac TwistWrap Mailers 350mm x 275mm x 60mm	20
TP15PS	Tufpac TwistWrap Mailers 350mm x 350mm x 40mm	20

Corrilope Corrugated Envelopes

If you need a mailer with better protection than a bubble lined mailer or is faster to load than a bookwrap look no further than Corrilope Board Envelopes. These envelopes are manufactured from strong stiff corrugated cardboard and as a result offer very high protection levels and puncture resistance. All sizes come with a peel & seal closure strip and a tear strip for easy opening.



Code	Description	Pack Qty
TPCCBE01	Corrilope Board Envelopes 150mm x 250mm x 50mm	100
TPCCBE02	Corrilope Board Envelopes 270mm x 185mm x 50mm	100
TPCCBE03	Corrilope Board Envelopes 215mm x 300mm x 50mm	100
TPCCBE04	Corrilope Board Envelopes 340mm x 235mm x 35mm	100
TPCCBE06	Corrilope Board Envelopes 250mm x 360mm x 50mm	100
TPCCBE08	Corrilope Board Envelopes 340mm x 500mm x 50mm	100
TPCCBE09	Corrilope Board Envelopes 420mm x 570mm x 50mm	50
TPCCBE10	Corrilope Board Envelopes 720mm x 530mm x 50mm	20

Tufpac CD Mailers

Fantastic presentation by using a clean white cardboard, the Tufpac CD mailers are the perfect answer for sending those electronic media business presentations with space for a leaflet or letter.

These CD Mailers are manufactured from strong stiff corrugated cardboard and as a result offer very high protection levels and puncture resistance. All sizes come with a peel & seal closure strip and a tear strip for easy opening.



Code	Description	Pack Qty
TPCDM01	Tufpac CD Mailer 225mm x 125mm x 12mm	100



Foam Lined Clam Shell Cartons

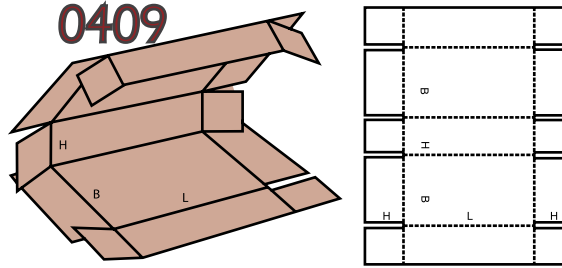
High protection packaging perfect for shipping fragile and delicate items. These cartons are based on a 0509 design with a soft profiled foam lining. Place your item on the foam and wrap around then slide the pack into the outer sleeve to secure. Also available in Anti-Static foam for sensitive electronic items.

Code	Description	Pack Qty
CSFC005	Clam Shell Foam Carton 180mm x 120mm x 50mm	25
CSFC015	Clam Shell Foam Carton 275mm x 180mm x 50mm	25
CSFC030	Clam Shell Foam Carton 275mm x 180mm x 80mm	25
CSFC040	Clam Shell Foam Carton 360mm x 280mm x 80mm	25
CSFC050	Clam Shell Foam Carton 525mm x 385mm x 80mm	25

Anti-Static (ESD) Foam Lined

Code	Description	Pack Qty
CSFC005AS	Clam Shell ESD Foam Carton 180mm x 120mm x 50mm	25
CSFC015AS	Clam Shell ESD Foam Carton 275mm x 180mm x 50mm	25
CSFC030AS	Clam Shell ESD Foam Carton 275mm x 180mm x 80mm	25
CSFC040AS	Clam Shell ESD Foam Carton 360mm x 280mm x 80mm	25
CSFC050AS	Clam Shell ESD Foam Carton 525mm x 385mm x 80mm	25

0409

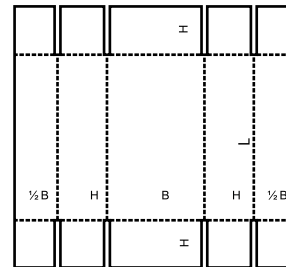
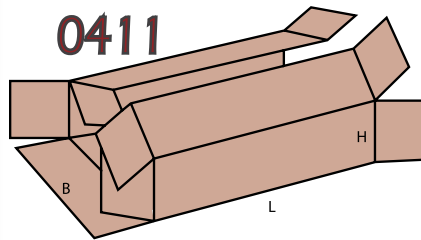


0410: Five Panel Wrap

Similar to our 0409 style but with the end flaps removed reducing the bulk of cardboard in the corners.

- No setup/origination costs (apart from printing)
- Some sizes are available with hand holes, perforations, picking slots, and other small simple internal diecuts.
- Can be fully bespoke designed.

0411

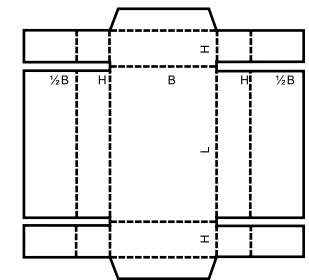
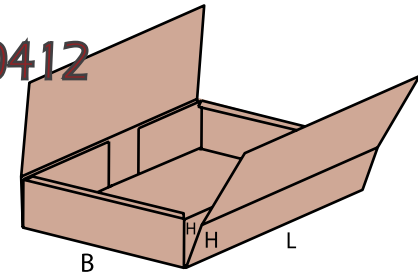


0411: Five Panel Wrap Flaps Meet

Similar to our 0409 style but with the flaps meeting in the middle of the largest face.

- This style reduces the material used and in most sizes increases ease of packing.
- No setup/origination costs (apart from printing)
- Some sizes are available with hand holes, perforations, picking slots, and other small simple internal diecuts.
- Can be fully bespoke designed.

0412



0412: Low Profile Top Loading Wrap

A cost effective carton for low profile items that need packaging quickly and efficiently. Corners can be taped or glued to form a very low profile top loading carton.

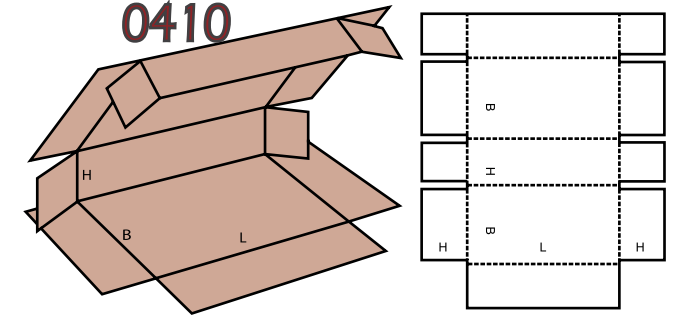
- No setup/origination costs (apart from printing)
- Some sizes are available with hand holes, perforations, picking slots, and other small simple internal diecuts.
- Can be fully bespoke designed.

0409: Five Panel Wrap

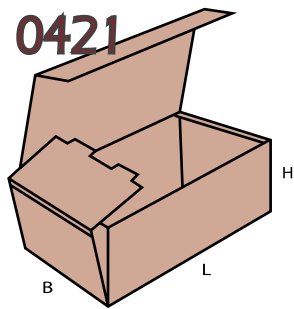
A popular, cost effective wrap for long, shallow or large format items such as doors, windows, flat-packed furniture, mirrors, etc...

- No setup/origination costs (apart from printing)
- Some sizes are available with hand holes, perforations, picking slots, and other small simple internal diecuts.
- Can be fully bespoke designed.

0410



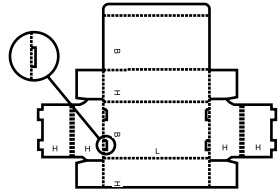
0421



0421: Diecut Carton with Tuck-in Flap

Popular carton style with a tuck in top flap which can also incorporate locking tabs. Often used as POS packaging for industrial and automotive parts.

- Setup/origination costs are applicable
- Available with fully bespoke internal diecutting.
- Can be fully bespoke designed.
- Can be adapted for Point Of Sale use.

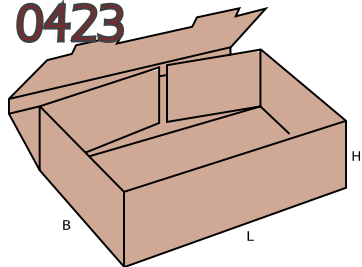


0422: Diecut Tray

Popular tray configuration for a wide range of applications. This design is quickly erected and needs no glue or staples.

- Setup/origination costs are applicable
- Available with fully bespoke internal diecutting.
- Can be fully bespoke designed.
- Can be adapted for Point Of Sale use.

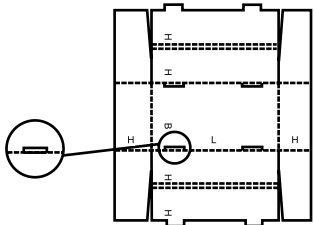
0423



0423: Diecut Tray

Similar to our 0422 style but with the tuck in flaps on the longer side increasing rigidity and compression strength.

- Setup/origination costs are applicable
- Available with fully bespoke internal diecutting.
- Can be fully bespoke designed.
- Can be adapted for Point Of Sale use.

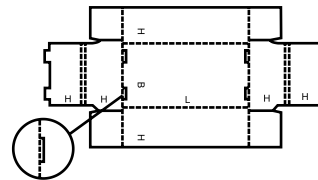
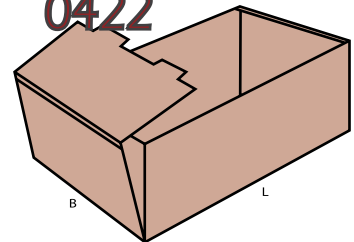


0424: Diecut Tray

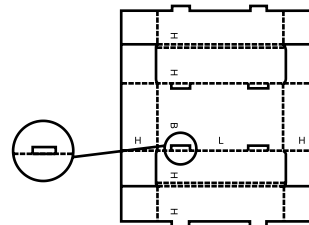
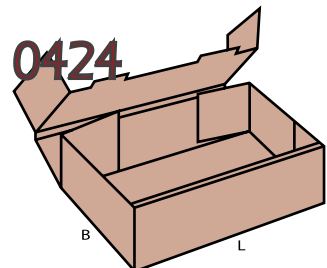
A development on our 0423 style of diecut tray to offer even more rigidity and strength especially to the end walls which are only single skin in an 0423 design.

- Setup/origination costs are applicable
- Available with fully bespoke internal diecutting.
- Can be fully bespoke designed.
- Can be adapted for Point Of Sale use.

0422



0424



Standard Board Grades

We offer a wide range of board grades that are classed as 'standard' i.e. don't incur extra premiums or surcharges. The most popular sizes are marked with an asterisk (*).

Code	Description
Single Wall 'B' Flute (approx. 3mm profile)	
B125KT*	Standard Single Wall Board with Brown Kraft Outer Paper
B125MT	Standard Grade Board with Mottled White Outer Paper
B125TT*	100% Recycled Board in 125gsm Outer Papers
B125VT*	100% Recycled Board with Recycled White Outer Paper
B125WT	Standard Grade Board with Kraft White Outer Paper
B150KT*	Similar to B125KT but with Heavier Outer and Inner Paper
B150KT(150S/C)	Similar to B150KT with a Chemically Strengthened Fluting
B150LT	High Recycled Content Board with Premium Outer Paper
B150MT	Premium Version of the B125MT Mottled White Faced
B150TT	100% Recycled Board in 150gsm Outer Papers
B150VT	100% Recycled Board with Recycled White Outer Face
B150WT	Premium Version of the B125WT
B180W200T	Heavy Duty White Faced Board with Brown Inside
B200KT*	Heavy Duty Brown Kraft Outer Face
B200KT(150S/C)	Similar to B200KT with a Chemically Strengthened Fluting
Single Wall 'C' Flute (approx. 4mm profile)	
C125KT*	High Profile Single Wall Standard Grade
C150KT	Premium Grade High Profile Single Wall
C180W200T	Heavy Duty Grade with White Kraft Outer Face
C200KT	Heavy Duty Grade with Brown Kraft Face
C200KT(150S/C)*	Similar to C200KT with a Chemically Strengthened Fluting
Double Wall 'BC' Flute (approx. 7mm profile)	
D125KT*	Standard Double Wall Grade
D125LT	High Recycled Content Board with Standard Outer Papers
D125MT	Standard Grade Board with Mottled White Outer Paper
D125TT	100% Recycled Board in 125gsm Outer Papers
D125WT	Standard Grade Board with Kraft White Outer Paper
D150KT	Premium Grade Board with Brown Kraft Outer
D150TT	Premium Grade 100% Recycled Content Board
D175M200T	Heavy Duty Board with Mottled Kraft Finish
D180W200T	Heavy Duty Board with White Kraft Finish
D200KK	Heavy Duty Board with Brown Kraft Both Sides
D200KT*	Heavy Duty Board with Brown Kraft Outer
D300KK(150S/C)	Similar to BC300KT with a Chemically Strengthened Fluting
D300KT*	Very Heavy Duty Board with Brown Kraft Outer



Diecut Postal Cartons

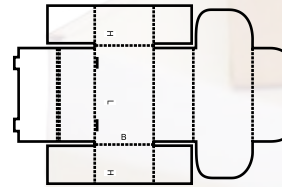
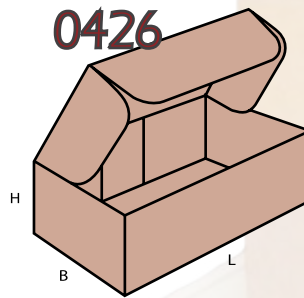
A selection of handy sizes for presentation packaging and sending items out in the post.

Code	Description	Pack Qty
622060402	S/W Diecut Carton 150mm x 100mm x 65mm	50
722040303	S/W Diecut Carton 115mm x 80mm x 75mm	50
722060403	S/W Diecut Carton 158mm x 115mm x 75mm	50
722090403	S/W Diecut Carton 220mm x 112mm x 70mm	50
722090602	S/W Diecut Carton 220mm x 140mm x 50mm	50
723080404	S/W Diecut Carton 210mm x 100mm x 100mm White	50
723120404	S/W Diecut Carton 310mm x 100mm x 100mm White	50
723180505	S/W Diecut Carton 450mm x 120mm x 120mm White	50
735181803	S/W Diecut Carton 450mm x 450mm x 75mm	50



Foam lined cartons also available, speak to our Sales Team for more information.

0426

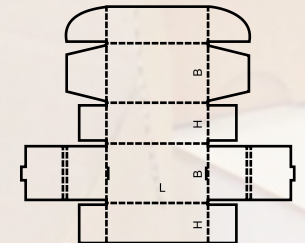
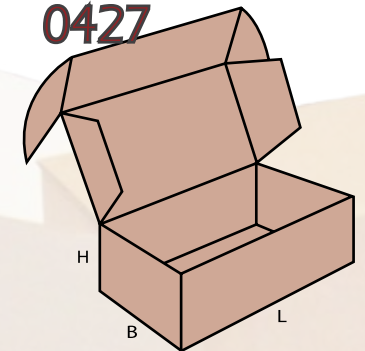


0426: Presentation Carton

Often used as presentation or gift packaging this carton is easy to erect and looks professional. Also can easily be adapted for Point Of Sale use.

- Setup/origination costs are applicable
- Available with fully bespoke internal diecutting.
- Can be fully bespoke designed.
- Can be adapted for Point Of Sale use.

0427

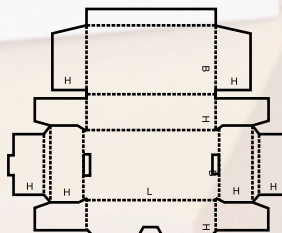
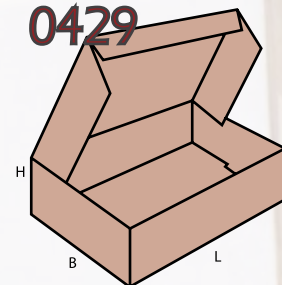


0427: Postal Carton

Similar to our 0426 design but with higher compression strength. Ideally suited to postal boxes due to its secure design. Also available with SealaStrip and TearaStrip for ecommerce packaging.

- Setup/origination costs are applicable
- Available with fully bespoke internal diecutting.
- Can be fully bespoke designed.
- Can be adapted for Point Of Sale use.

0429

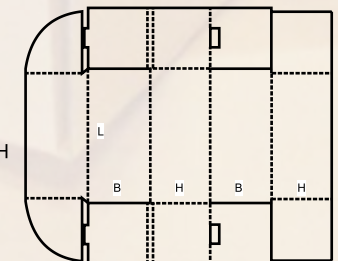
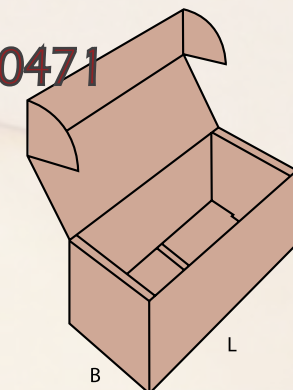


0429: Presentation/Postal Carton

Similar to our 0427 style but with a tuck in top flap and more cost-effective construction design. This can be used for the same applications as a 0427 but is not as secure.

- Setup/origination costs are applicable
- Available with fully bespoke internal diecutting.
- Can be fully bespoke designed.
- Can be adapted for Point Of Sale use.

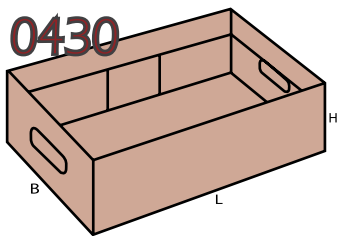
0471



0471: Postal Carton

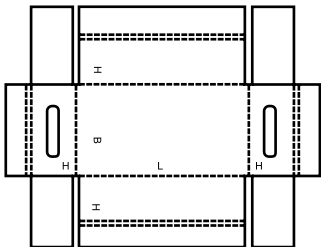
A development on our 0427 and often offers better board utilization so is more cost effective over larger volumes. This design can only be used for certain carton sizes, please speak to our sales team for more information.

- Setup/origination costs are applicable
- Available with fully bespoke internal diecutting.
- Can be fully bespoke designed.
- Can be adapted for Point Of Sale use.

0430**0430: Standard Produce Tray**

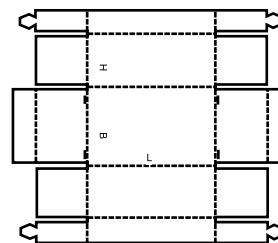
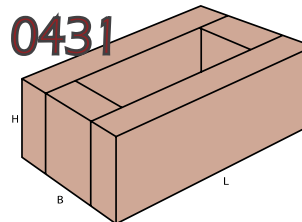
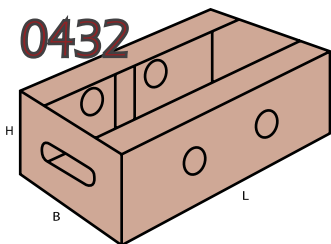
A standard low cost tray for a wide selection of applications. Often used for packing flowers and produce ready for resale.

- Setup/origination costs are applicable
- Available with fully bespoke internal diecutting.
- Can be fully bespoke designed.
- Can be adapted for Point Of Sale use.

**0431: Stackable Produce Tray**

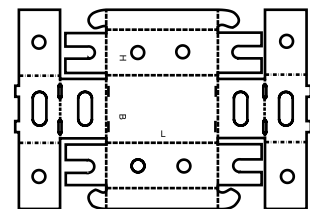
For similar applications as our 0430 design but the top flaps allow this style to be stacked easily. A much better design if you are bulk stacking onto pallets.

- Setup/origination costs are applicable
- Available with fully bespoke internal diecutting.
- Can be fully bespoke designed.
- Can be adapted for Point Of Sale use.

0431**0432****0432: Standard Produce Tray**

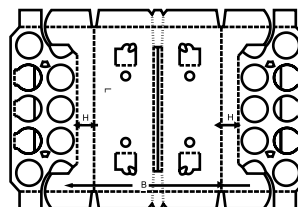
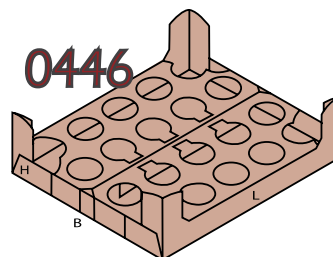
Similar to our 0431 design but with airflow holes and reinforced handle areas. This style generally works out more expensive but is more durable and stronger.

- Setup/origination costs are applicable
- Available with fully bespoke internal diecutting.
- Can be fully bespoke designed.
- Can be adapted for Point Of Sale use.

**0446: Pot Tray**

A stackable tray which is generally used for potted products such as yogurts, flowers, etc...but can also be used for a wide range of other items providing they have compression strength.

- Setup/origination costs are applicable
- Available with fully bespoke internal diecutting.
- Can be fully bespoke designed.
- Can be adapted for Point Of Sale use.

0446**Things you need to know about Corrugated Board...****Samples**

Samples are provided to confirm the size and style of a new job. It is very important that this sample is checked with the full content of the actual goods. It is important to point out that samples are generally hand made either hand cut, cad cut or laser cut. The actual sample produced will appear to vary slightly in board thickness from factory production because of the effect of pressure on the flutes on boxes produced through the factory. Prices quoted are generally valid for 30 days unless agreed otherwise. Allow for possible variation in unit packaging cost if you are using a price quoted for some tender that may be many months ahead.

The colour of the corrugated board liner may change slightly either between runs or even during one production run. This can be due to many factors, commonly it is due to the fact that the origins of the actual liner may be different. However the actual specification of the paper would be unchanged and it is purely a visual difference and performance would not be affected by a slightly different colour

Box Specifications

When a box specification is set there are normal working tolerances that need to be considered. These relate to actual size and board weight. Manufactured boxes can have a variation of + or - 5mm so it is important to judge final size in the light of this. Board grades may vary in paper weight eg 150 GSM Kraft may actually be 140 GSM. Again it is important to see how critical these tolerances are in relation to your actual specification. The size tolerance factor can be improved if the box can be Die-Cut.

Quantity

When a quotation is requested it is important to understand that a price for 1000 lots is the price for an order of 1000. If you only require 250 lots the price will almost certainly go up. It is also true that if you ask for 1000 price if you then need to order 2000 lots you could expect to get a lower pro-rata price.

When an order is placed for specially produced boxes there is a risk of 10% variation on the actual quantity ordered.

Another important factor that can impact on volume is the storage space needed to store corrugated. Be sure that you are aware of the volume of space needed to store the corrugated boxes that you order.

Origination Costs

When a box is Die Cut, A cutting forme is required. This is usually charged as a once only charge. Cost of formes can vary from under £100 up to £1500 depending on the size and complexity of the job.

When a job is printed even 1 colour reference print there is usually a small stereo cost and as the print becomes more complex there would be extra artwork and stereo costs. Stereo costs are nearly always quoted subject to sight of customer artwork.

Printing

Corrugated cartons and board may be printed for all sorts of reasons. It may be for identification (Bar code or Reference), Health and safety issues, Legal requirements, Brand uniformity or General point of sale presentation. A Corrugated case acts to ensure that the product is safe in transit, A Printed Corrugated case acts to convey a sales message about the product and the company that makes it. It is true to say that the box creates the perception of the product.

There are many ways to print corrugated board or boxes. The actual choice of method is dependent on a number of factors.

- Print quality required- Visual impact and finish required
- Quantity required
- Price / Budget
- Board grade used

No Nail Plywood Cases

A range of plywood crates that can be easily constructed without the need for nails or glue. Their lightweight construction makes them the perfect choice for both national and international shipments. Typically carrying up to 200kg in weight these cases are a low cost alternative to traditional timber crates and can also be reinforced to carry heavier loads quickly and easily. They are delivered and stored in flat pack form taking up less than 10% of the equivalent sized wooden crate. They are usually strapped with heavy duty polyprop or polyester strapping to provide extra strength and security during transit.



Code	Description	Grade
NNPWC005	No Nail Plywood Crate 235mm x 235mm x 235mm	4mm
NNPWC010	No Nail Plywood Crate 330mm x 235mm x 235mm	4mm
NNPWC015	No Nail Plywood Crate 480mm x 335mm x 235mm	4mm
NNPWC020	No Nail Plywood Crate 480mm x 485mm x 285mm	5mm
NNPWC025	No Nail Plywood Crate 480mm x 485mm x 485mm	5mm
NNPWC030	No Nail Plywood Crate 580mm x 485mm x 285mm	5mm
NNPWC035	No Nail Plywood Crate 580mm x 485mm x 485mm	5mm
NNPWC040	No Nail Plywood Crate 730mm x 485mm x 355mm	5mm
NNPWC045	No Nail Plywood Crate 730mm x 485mm x 485mm	5mm
NNPWC050	No Nail Plywood Crate 730mm x 585mm x 485mm	5mm
NNPWC055	No Nail Plywood Crate 730mm x 735mm x 485mm	5mm
NNPWC060	No Nail Plywood Crate 855mm x 735mm x 485mm	5mm
NNPWC065	No Nail Plywood Crate 980mm x 585mm x 585mm	5mm

Wooden Crates

When ultimate strength and protection is needed, ask about our range of timber crate options. We have countless designs that can be modified to fit your particular application and shipping requirements.

There are a range of general construction methods that we use depending on the weight of the items being shipped and the level of protection needed. Bespoke internal fittings can be manufactured for each particular item to be packed and protective foam pads can be inserted for extra padding and protection.

Bespoke Pallet Bases

Not every item will fit onto standard pallet sizes and so we offer a fully bespoke pallet base manufacturing service which allows you to specify exactly what size and what quality you want your pallet base to be. These are often used in conjunction with cardboard sleeves for a high performance, cost effective transit solution.

Hybrid Transit Crates

Our lowest cost transit case option utilising a timber structure with high grade water resistant cardboard panels. This option gives the strength and rigidity of a wooden case but economises on cost and weight by using cardboard where possible.

Economy Grade Timber Crates

Based on a simple construction design these are for general lighter weight items that need the extra protection that timber gives but need to be made to a tighter budget.

Premium Grade Timber Crates

For most applications we offer a premium construction which will withstand the rigours of road, rail, sea or air transport in all weathers. Made from quality timber and reinforced structure design make these crates virtually indestructible allowing you to ship with peace of mind.

Large Format Crates

If you're shipping something big it needs something a little more specialised in terms of designing and construction. We can offer crate sizes as large as you need, our motto being "if you can make it or buy it....we can crate it!!"

Designer Crates

If you are looking for something special ask our sales team about Designer Crates. We can offer coloured, stained, printed and elaborately designed crates for those extra high value goods. Whether you want a curved top and designer hinges and clasps to make your crate look like a treasure chest or a marble finish to add the extra wow factor.



Air Freight

Transport by air is relatively expensive and requires extra care when packaging items ready for transit. Weight savings and therefore costs savings can be made through careful designing and material selection. More than adequate protection in some areas can increase weight and inadequate protection in other areas can increase the potential for damage.

Our NEW Foam reinforced board is pioneering the way forward in lightweight air transit packaging offering high strength, low weight, watertight, and impact resistant protection for a wide range of machinery, automotive/aero parts, antiques, and many other fragile items during air, sea, rail, and road transit.

For more information and demonstrations contact our Sales Team today.



Pallet Boxes

A range of pallet boxes in popular sizes for shipping throughout the UK and exporting across the globe. Also useful as storage containers and bulk picking bins and a range of other applications.

Most carton configurations come flat packed for easy storage and handling.

Heat Treated Pallets are essential for shipping abroad and must conform to ISPM15 regulations.



Code	Description	Pack Qty
TCSP121090	Full Container Tray, Cap & Sleeve 1070mm x 870mm x 900mm with Standard Pallet	10
TCSP121055	Half Container Tray, Cap & Sleeve 1070mm x 870mm x 550mm with Standard Pallet	10
TCSP128065	Full Europa Tray, Cap & Sleeve 1070mm x 780mm x 650mm with Standard Pallet	10
TCSP806060	Half Europa Tray, Cap & Sleeve 780mm x 580mm x 600mm with Standard Pallet	20
TCSP121090HT	Full Container Tray, Cap & Sleeve 1070mm x 870mm x 900mm with Heat Treated Pallet	10
TCSP121055HT	Half Container Tray, Cap & Sleeve 1070mm x 870mm x 550mm with Heat Treated Pallet	10
TCSP128065HT	Full Europa Tray, Cap & Sleeve 1070mm x 780mm x 650mm with Heat Treated Pallet	10
TCSP806060HT	Half Europa Tray, Cap & Sleeve 780mm x 580mm x 600mm with Heat Treated Pallet	20
PN	Corrufix Pallet Nails 45mm Shank Square Head	500

Eurofit Double Wall Cartons

A range of double wall cardboard cartons that fit snugly onto a euro pallet giving you a quick and easy solution to packing uniform pallets. Most sizes can be combined on one pallet to give you a modular selection of carton sizes to pack a range of items.



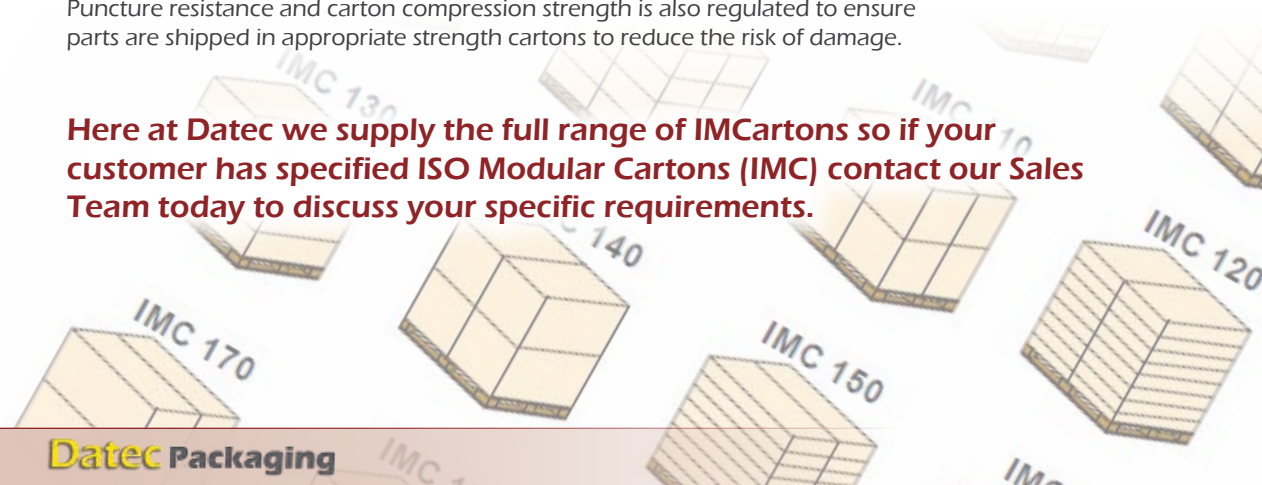
Code	Description	Pack Qty
242111012	D/Wall Carton 286mm x 252mm x 305mm	15
242150912	D/Wall Carton 386mm x 226mm x 305mm	10
242151112	D/Wall Carton 386mm x 286mm x 305mm	10
242151512	D/Wall Carton 386mm x 386mm x 305mm	10
242231512	D/Wall Carton 586mm x 386mm x 305mm	10
242311519	D/Wall Carton 786mm x 386mm x 472mm	10

ISO Modular Cartons

ISO Modular Cartons are specific external sized cartons which will fit within certain total package sizes when stacked together on a pallet. These cartons are often required in the automotive industry and by some freight handlers so that the outer pallet size is regulated to strict outer dimensions.

Puncture resistance and carton compression strength is also regulated to ensure parts are shipped in appropriate strength cartons to reduce the risk of damage.

Here at Datec we supply the full range of IMCartons so if your customer has specified ISO Modular Cartons (IMC) contact our Sales Team today to discuss your specific requirements.



Custom Printed Tape up to 4 Colours!! Speak to our Sales Team for more info.

Megatop Pallet Top Sheets

Polythene pallet top sheets for covering and protecting the tops of pallets. Creates a water-tight cover over your products to protect against water damage.

Code	Description	Pack Qty
MEG1816C	Megatop Pallet Top Sheet 900/1800 x 1600 MD18	250/Roll
MEG1816B	Megatop Pallet Top Sheet 900/1800 x 1600 Black LD30	250/Roll
MEG1315C	Megatop Pallet Top Sheet 1300 x 1500 MD18	500/Roll
MEG1715C	Megatop Pallet Top Sheet 850/1700 x 1500 LD30	250/Roll



Plastic Pallets

A range of robust, durable plastic pallets that offer a highly cost effective option with a much greater life expectancy than wood. Perfect for the Fresh Produce, IT, Engineering and Pharmaceutical business sectors where hygiene and clean working environments are essential.

Code	Description	Pack Qty
PP8060STD	Standard Grade Plastic Pallet 800mm x 600mm	10
PP1280STD	Standard Grade Plastic Pallet 1200mm x 800mm	10
PP1210STD	Standard Grade Plastic Pallet 1200mm x 1000mm	10
PP1210HD	Heavy Duty Grade Plastic Pallet 1200mm x 1000mm	10



Anti-Slip Pallet Layer Sheets

The perfect solution to unstable pallets, these paper sheets are coated with an anti-slip coating providing increased pallet stability up to an angle of 45°!! Use less strapping or stretchfilm and increase your pallet stability in transit with this simple solution.

The Benefits:

- Stabilise pallet loads of sacks, bags and cartons
- Reduction of secondary packaging, such as stretchfilm & strapping
- Efficient on all materials- paper, corrugated, cartons, glass and plastic packing
- Water repellent, ideal for preventing moisture damage
- High performance- effective up to angles of 45°
- 100% recyclable
- Unique anti-slip coating

Code	Description	Pack Qty
ASS8012STD	Anti-Slip Layer Sheets 800mm x 1200mm 100gsm	200 shts
ASS1012STD	Anti-Slip Layer Sheets 1000mm x 1200mm 100gsm	200 shts



Pallet Cardboard Layer Pads

Cardboard layer pads for interleaving between palletized goods offering enhanced protection during transit. This product also greatly helps to increase pallet stability as it produces 'ties' between products on a pallet. Manufactured using double faced corrugated board they are 100% recycled and 100% recyclable.



Code	Description	Pallet Qty
PLS05	Cardboard Layer Pads 395mm x 595mm	1600
PLS10	Cardboard Layer Pads 595mm x 795mm	800
PLS15	Cardboard Layer Pads 780mm x 1180mm	400
PLS20	Cardboard Layer Pads 980mm x 1180mm	400



Presswood Pallets

The ultimate pallet offering nestable design, solid one-piece construction with no nails or screws and ISPM15 accredited. As a result these pallets offer a space saving, injury and damage reducing, exportable pallet that are recognised world wide as being the ultimate pallet. The rounded corners also save time when applying stretchfilm helping to cut the amount of tears and splits during wrapping.

Code	Description	Pack Qty
PWP6040	Presswood Pallet 600mm x 400mm	10
PWP8060	Presswood Pallet 800mm x 600mm	10
PWP1280	Presswood Pallet 1200mm x 800mm	10
PWP1210	Presswood Pallet 1200mm x 1000mm	10
PWP1111	Presswood Pallet 1140mm x 1140mm	10



BoardPal Cardboard Pallets

A range of cardboard pallets manufactured with 100% fibreboard so are 100% recyclable, 100% bio-degradable and contamination free. These pallets are great for air freight as they are light weight, they can be bespoke printed and are clean and easy to handle with no risk of splinters. Pallets can be bespoke made to specific sizes and weight handling limits.

Heavy Duty options can take up to 1000kg uniform static load and can be used with pallet racking and conveyors.

Code	Description
BPCP1210MD	BoardPal Cardboard Pallet 1200mm x 1000mm Medium Duty
BPCP1280MD	BoardPal Cardboard Pallet 1200mm x 800mm Medium Duty
BPCP8060MD	BoardPal Cardboard Pallet 800mm x 600mm Medium Duty
BPCP6040MD	BoardPal Cardboard Pallet 600mm x 400mm Medium Duty
BPCP1210HD	BoardPal Cardboard Pallet 1200mm x 1000mm Heavy Duty
BPCP1280HD	BoardPal Cardboard Pallet 1200mm x 800mm Heavy Duty

Integrated Pallet Cartons

Have you ever thought of integrating your pallets and pallet boxes together into one complete easy to use unit?

We can offer a fully bespoke range of pallet cartons with a weather resistant integrated pallet designed specifically to carry the weight you need, helping to cut your packing time and boost your efficiency. Cut your air freight costs by cutting the weight of your pallets and cut out the need for ISPM15 certification.



Reusable Pallet Carton Systems

Here at Datec we have a range of reusable pallet tray, cap and sleeve packaging options which are more cost effective than plastic crates. These systems are popular within the automotive industry where reusable packaging is common and offer a weather resistant option to both UK Standard and Euro crate sizes.



LicwiTrans Liquid Transit Cartons

Are you transporting bulk liquids and need a low cost solution? Look no further than our LicwiTrans Cartons. These cartons are manufactured from heavy duty weather resistant fibreboard and contain a polythene bag inner with a pour spout allowing you to bulk fill quickly and easily. These cartons will also flatpack for easy space saving storage.



Transit Hazards

When packaging your products there are some particular areas which need extra attention. Here we have outlined some of the most common hazards which your packages may come across on their journey to your customer. You need to pay special attention to these areas and make sure your packaging will protect your products sufficiently. If in doubt speak to one of our Sales Team, they will be happy to help.

Punctures and Abrasion:

Occurs when the package shifts or comes in contact with other packages or material handling equipment during sorting and other shipping operations. They can also be the result of improper or insufficient internal packaging that does not prevent the contents from shifting, resulting in the product being damaged or the package failing to contain the product.

Compression:

Occurs when external forces are applied to the sides, faces or corners of a package. Stacking, shock, vibration, material handling equipment and tie-down straps all generate compression forces that may result in package or product damage. Proper packaging offers the necessary level of protection against these forces.

Environmental Exposures:

High and low atmospheric pressures are not restricted to air transit and can have a dramatic effect on some products or packages. High and low humidity can result in condensation or corrosion, and it can greatly reduce the stiffness and compression resistance of paper-based products. Temperature extremes globally can range from -80° F to +160° F and can dramatically affect the performance characteristics of packaging material. Other common environmental exposures include, but are not limited to, dirt, dust, odours and precipitation. If a product or package would be considered damaged if exposed to these hazards, then the shipper must take extra measures to ensure the package can protect the shipment from these known hazards.

Shipment Handling:

Proper cushioning can reduce damage caused by the shock incurred during shipment handling. It is important to note that your shipment will most likely be handled with a forklift at some point during distribution. Proper packaging must be able to protect the contents from the drops and impacts commonly associated with handling operations.

Shock:

Occurs during handling and transportation as a result of impacts with forklifts, racks, containers, floors and other shipments. Proper cushioning can reduce damage caused by shock. Most products will require some level of shock protection to prevent damage during normal distribution.

Vibration:

Occurs in transport vehicles like trucks, planes or ships and on virtually anything else that moves, such as forklifts or conveyor belts. Proper cushioning can absorb and reduce the negative effects vibration can have on your product.

Did you know...

The e-commerce market is growing rapidly and we are responding with an expanding range of e-commerce postal packs which incorporate peel and seal closures, tear off strips, resealable adhesive strips, gift packaging and many more options helping you to deliver effectively in the competitive world of web-based sales.

We can design and develop the perfect solution for you and your products reflecting your brand in a range of printing options and carton designs. We are also working with packing machinery manufacturers to develop high speed automated packing lines enabling you to increase throughput, drive down costs and increase profits.

Call our Sales Team today on 02476 611234 or email sales@datecpackaging.com

